

Setup Instructions

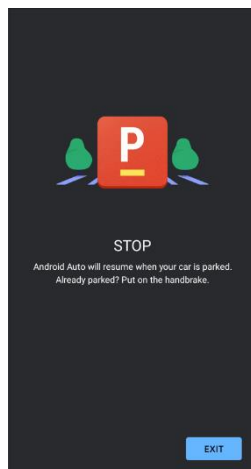
Using Android Auto with a USB cable

First connection

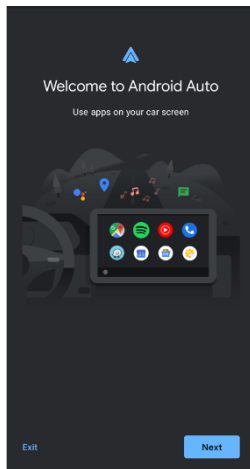
- Make sure there is an Android Auto icon on the home screen



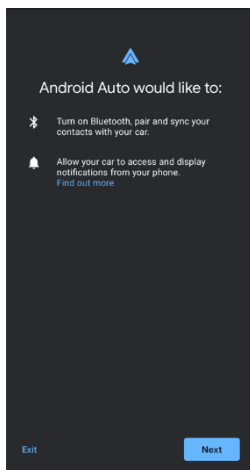
- Engage parking brake. If not, Android device will prompt following warning when connecting



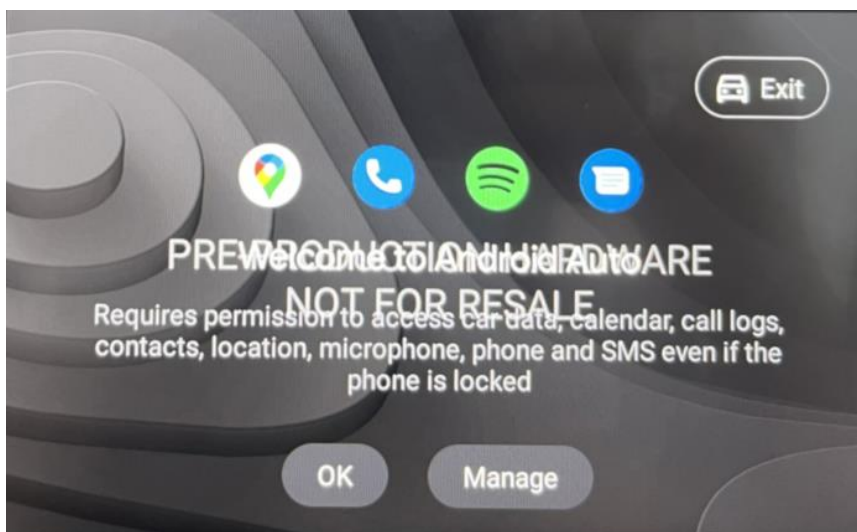
- Connect an Android compatible device with the USB cable
- Check welcome page on the Android device



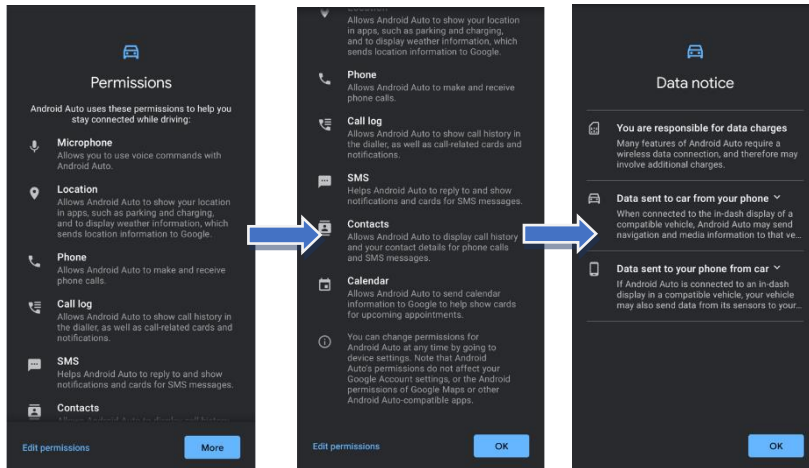
- Acknowledge Android auto would like to use information from device



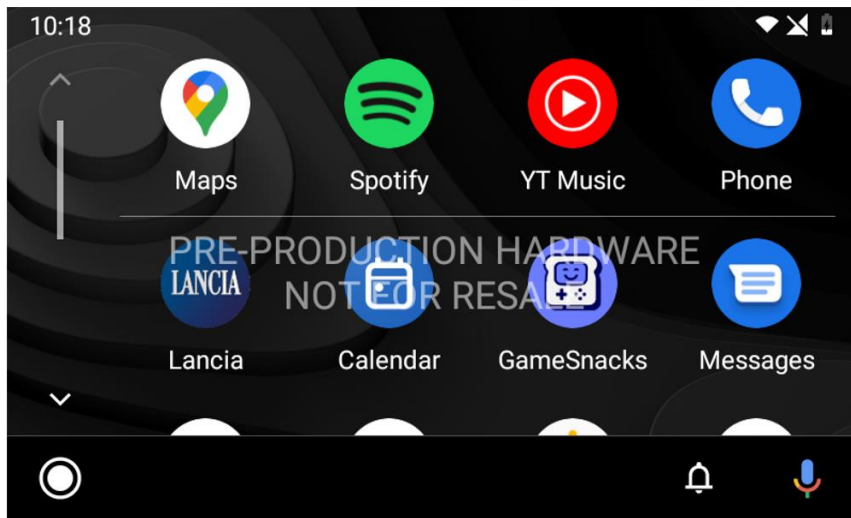
- Tap 'Manage' on the headunit



- Confirm and Grant access permissions on the Android device when prompted



- Tap "Continue" on head unit then Android Auto projection mode will be displayed

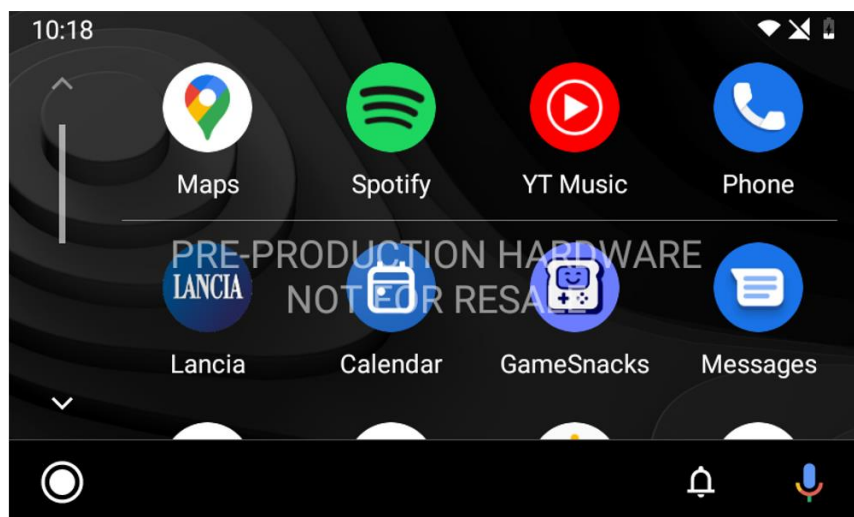


Second or subsequent connections

- Make sure there is an Android Auto icon on the home screen



- Connect an Android compatible device with the USB cable
- Android Auto projection mode will be displayed



How to access Android Auto after connecting

Tap on Android Auto icon to enter projection mode




Minimum requirements

Using Android Auto with a USB cable

- An Android phone with Android 6.0 and higher
- The latest version of the Android Auto App
- A high-quality USB cable that meets standards of the USB Implementers Forum

Troubleshooting

If Android Auto projection isn't working,

- A. Check with the support team if your car is compatible
- B. Check if the device meets the minimum requirement
- C. Check your USB cable, a high-quality USB cable is needed and avoid using cable extensions
- D. Check your settings if you're connecting to a second car:
 1. Unplug your phone from the car
 2. Open the Android Auto app on your phone
 3. Select Menu  > Settings > Connected cars
 4. Uncheck the box next to the "Add new cars to Android Auto" setting
 5. Try plugging your phone into the car again
- E. Restart the car's infotainment system
- F. Check with the support team if new firmware update is available
- G. Check if the device network works well when using Google Assistant

Disclaimer

Google, Android and Android Auto are trademarks of Google LLC. To use Android Auto on your car display, you'll need an Android phone running Android 6 or higher, an active data plan, and the Android Auto app.